



McLEOD COUNTY HIGHWAY DEPARTMENT

1400 Adams Street SE, Hutchinson, MN 55350

(320) 484-4321 • Fax (320) 234-6971

John Brunkhorst, PE
County Engineer

Phil Schmalz, PE
Assistant County Engineer

Elvis Voigt
Maintenance Superintendent

Christy Christensen
GIS Director

NEWS RELEASE

BRIDGE ON CR 90 (KOALA ROAD) CLOSED

October 17, 2017

Bridge L5809 located on County Road 90 (Koala Road) immediately north of CR 11 (155th street) has been closed due to structural concerns that were identified during a recent safety inspection.

Bridge inspectors discovered portions of the wooden substructure were severely decayed and deteriorated, prompting the bridge closure.

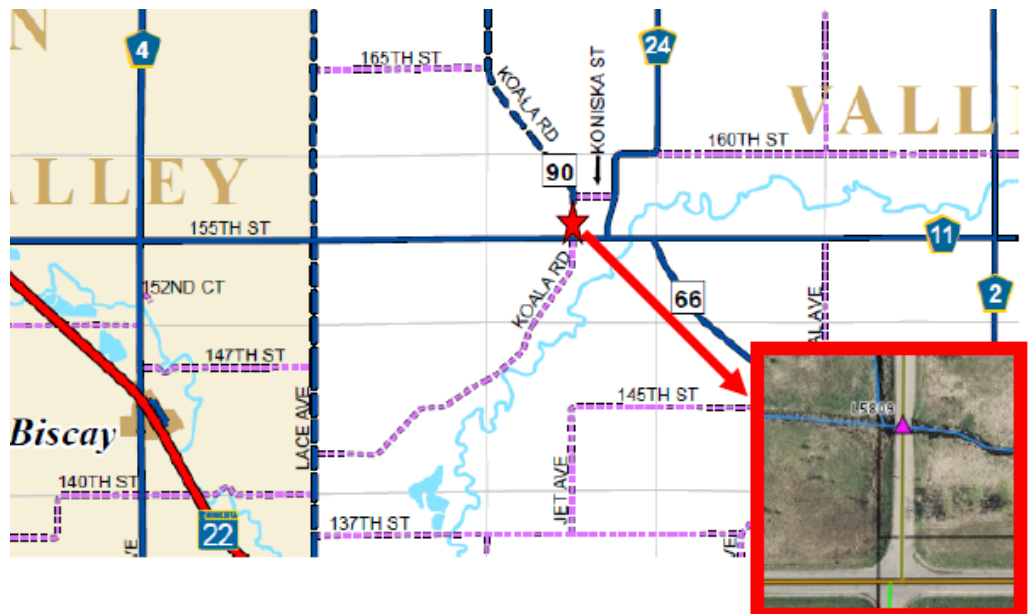
There is no detour established. Local traffic should use adjacent roads.

The timber bridge was built in 1971.

The County is reviewing replacement options and working with MnDOT to identify potential State funds that could be utilized for a replacement project.

The McLeod County Highway Department apologizes for any delays and inconveniences this causes.

John Brunkhorst, PE
McLeod County Engineer



GIS · Engineering · Maintenance
www.co.mcleod.mn.us/highway

Equal Opportunity/Affirmative Action Employer



McLeodCoHwy